

M16 x 2.0 THREAD x 1.25 DEEP
C'BORE DIA .670 x .320 DEEP

PRECISION GROUND
FOR DUAL CONTACT FIT

Ø 2.48

Ø 1.75

Ø 1.60

SK16-HT14 COLLET NUT

.65

2.58

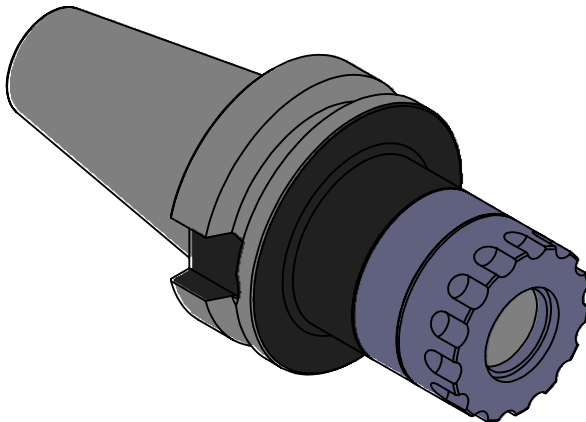
0

.04

1.06

1.81

3.00



NOTES:

WORKS ON ALL BT40 MACHINES WITH DUAL CONTACT SPINDLES

COMPATIBLE WITH BIG-PLUS® SPINDLES

TAKES ALL SK16 COLLETS FROM .09"-.630"

USES WRENCH PART # HT14-TWA TORQUE WRENCH (NOT INCLUDED)

FOR MORE PRODUCT DETAILS PLEASE GO TO MARITool.COM

AND SEARCH ITEM # LISTED ON THIS PRINT

MARITool

WWW.MARITool.COM

ITEM# **BT40 SK16-3.0D-HT**

Made in USA